

An aerial photograph of a dense, vibrant green forest. A river winds through the center of the forest, forming a distinct spiral pattern. The river's path starts from the bottom and curves upwards and then back down, creating a continuous spiral. The surrounding forest is thick and lush, with varying shades of green. Soft, white mist or fog hangs in the air, particularly around the edges of the river and in the lower parts of the forest, adding a sense of depth and atmosphere to the scene.

CORPORATE SOCIAL RESPONSIBILITY

2022 – 2023 Review



As a leading independent engineering group, Quartzelec provides a multi-disciplined and distinctive range of contracting and rotating machine solutions and services to meet the demands of both UK and global markets. Proudly guided by over 100 years of experience and technical expertise in the repair and maintenance of motors and generators, Quartzelec assist in prolonging the lifespan of these critical assets through our diverse portfolio of products and services across the Quartzelec group of companies, contributing significantly to the circular economy. Our specialist HV and LV contracting knowledge is inherited from some of the most respected names in electrical utilities, building on our strengths in power distribution and connections, offering comprehensive end-to-end solutions in M&E Services.



Quartzelec has continued on its sustainability journey and is deeply proud of the initiatives implemented across the group of companies, working together with our Quartzelec people, engaging with our local communities and forging more ethical partnerships with our stakeholders, to support the delivery of a more sustainable business and future. This report shares our work in support of this belief throughout our financial year 2022/23.

We...



STRIVE

to ensure our business is respected in our ethical and sustainable standing by our stakeholders and partners including our customers, suppliers, employees and the communities in which we work.

EMBRACE

the role our business plays on a day-to-day basis in proactively fulfilling our responsibility to the people who contribute to our success and the planet we share.

BELIEVE

that the way we operate our business can and should make a positive difference.

RECOGNISE

the value and importance of our contribution towards the values of the UN's 17 Global Sustainable Development Goals, working together with all of our stakeholders to build a more sustainable future for the next generation and empowering them to continue the journey of sustainability.



How we make a
Positive Difference

Our Priorities for 2022/23	1
Protecting Our Planet	2
Community Engagement & Social Impact	8
Business Partnerships	18
Our Quartzelec People	20
Sustainable Business Growth	24
Onwards & Upwards	26

Our Priorities for 2022/23

FOCUS ON CLIMATE ACTION as we commit to maintaining or reducing our carbon emissions

Ensuring sustainable consumption patterns as we review our **ZERO WASTE TO LANDFILL**

Contributing to **QUALITY EDUCATION** by delivering targeted sessions on sustainable energy practices

Promoting **HEALTH AND WELLBEING** with our Quartzelec People, reviewing our initiatives to support all aspects of their personal and social development

Engaging with our **LOCAL COMMUNITIES** by supporting charities and initiatives that contribute to **NO POVERTY AND ZERO HUNGER**

Globally recognised... locally accomplished

Quartzelec is committed to meeting international benchmarks. Compliance to ISO standards is paramount as we emphasise our focus towards quality, safety, health and the environment. Accredited to ISO 9001:2015 to deliver quality solutions and services that conform to customer specifications and applicable external regulations. Prioritising health and safety (H&S) through compliance with ISO 45001:2018, ensuring we continuously work on improving our H&S performance. Navigating our journey in the field of environmental responsibility with ISO 14001:2015 striving to reduce our environmental impact.

Our high expectations are further enhanced by our adherence to relevant industry-specific standards, including the Rail, Utilities and Electricity Connections markets. Many of our workshop facilities are accredited as IECEx Service Centres involved in the repair, overhaul and modification of Ex equipment in accordance with IECEx OD314 and IECEx OD315 of the IECEx scheme.

Dedicated to ensuring our policies and procedures maintain our benchmark to retain our ISO Accreditations.



AIMING TO DEMONSTRATE
OUR PROGRESS IN MEETING
INTERNATIONAL BENCHMARKS

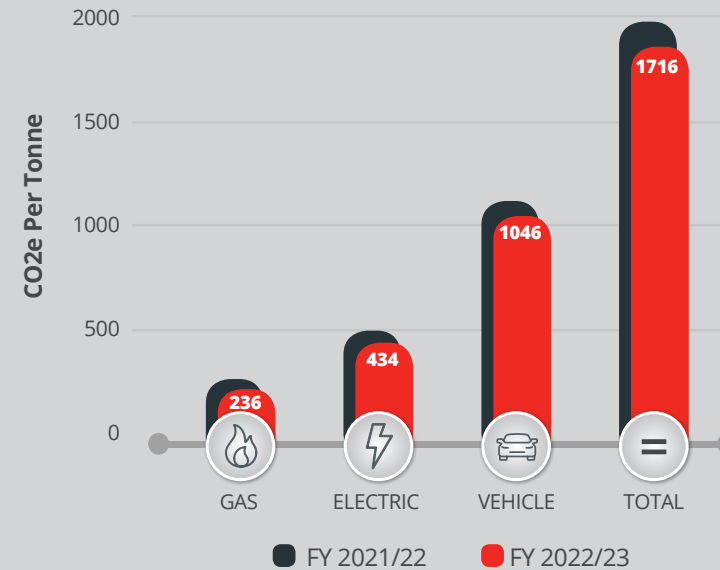
Protecting Our Planet

With a global reach and a focus on energy generation and distribution, we embrace our responsibility to conserve natural resources and global ecosystems to not only protect our planet, but support the health and wellbeing of its people, now and for future generations.

A Lighter Footprint

We are committed to minimising our environmental impact by closely monitoring carbon emissions and consumption of electricity and gas across our operations. Additionally, we track the fuel usage and mileage of our vehicle fleet, leveraging the ESOS (Energy Savings Opportunity Scheme) tracker, enabling us to accurately calculate our transport carbon emissions. To further enhance our energy efficiency, we regularly conduct thorough assessments on the energy consumed by our buildings, industrial processes, and transport infrastructure. These assessments provide valuable insights, allowing us to identify cost-effective energy-saving measures that we can implement to drive down energy usage and associated emissions.

Our UK Carbon Emissions



44kg

of plastics saved in a 12 month period

47%

increase of plastic saved from the previous year

Project Turtle

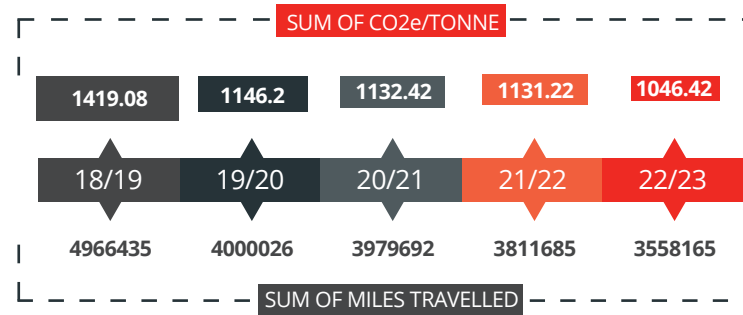
Quartzelec continue with our 'Project Turtle' initiative in support of sustainable procurement and the reduction of single use plastics. The year was spent researching sustainable alternatives that can be used in workshops and sites whilst still maintaining the high quality and robustness that is required.

Additionally, our appointed UK PPE supplier has continued to remove all single use plastics at source from our supply chain which over a 12 month period, has saved 43.65kg of plastics...47% increase from last year contributing to plastic reduction in our oceans.



Our Journey to Emission Reduction Vehicles

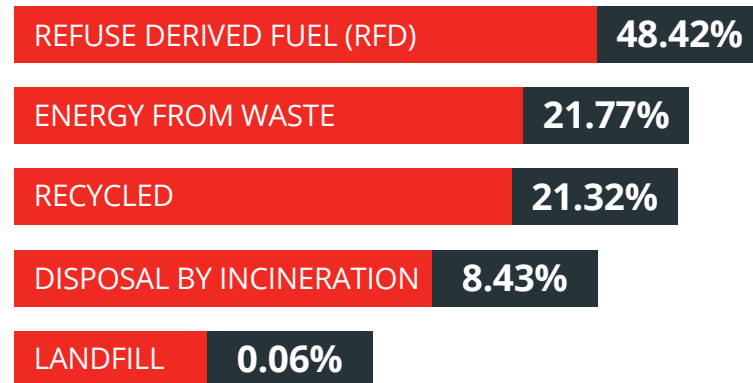
Quartzelec track CO2 emissions and are proud to confirm we are continuing to reduce year on year, as we invest in initiatives to increase our fleet of hybrid and electric vehicles and continually replace vehicles, with new, more energy efficient models.



Zero Waste to Landfill

Quartzelec continue to achieve 'Zero Waste to Landfill' status. Working with waste management specialist 'Waste Experts' to maximise the volume of waste that is recycled, repurposed or recovered, whilst improving operating and production efficiencies that reduce the amount of waste created.

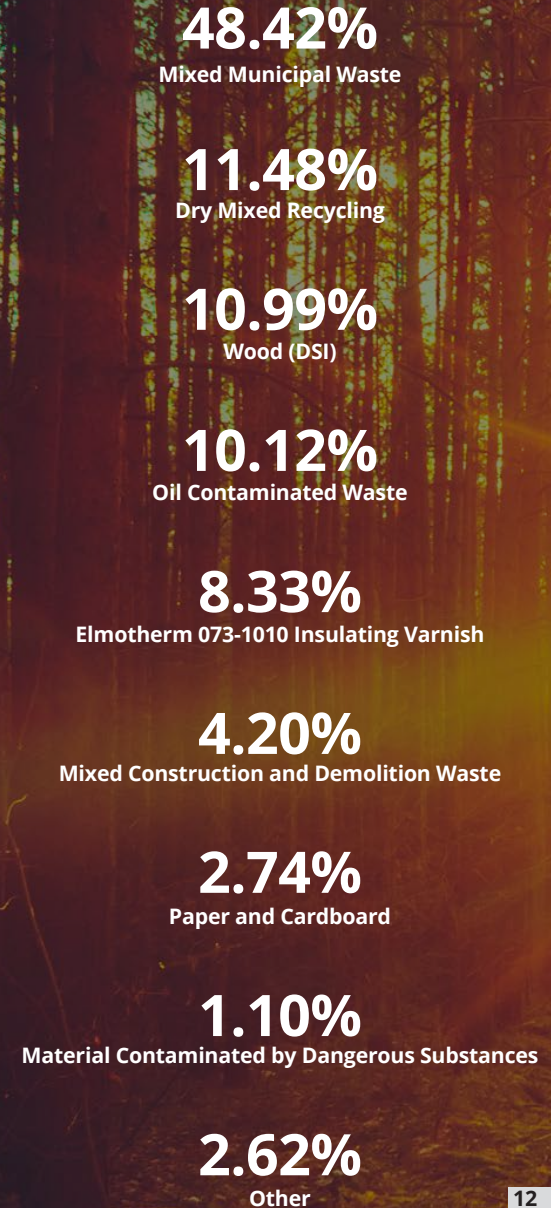
Disposal Methods



92%
of materials recycled / recovered in the last 12 months

85
tonnes of carbon saved in the last 12 months

Materials Breakdown





CASE STUDY

Clyde Windfarm is one of Europe's largest operational onshore wind farms located in South Lanarkshire, Scotland. With 206 units in total, the 522MW wind farm is run by SSE Renewables on behalf of its partner organisations. With a strong track record within the Renewables Sector and a business unit located close to site, Quartzelec was well placed to secure a 4 plus 1-year framework contract from SSE, providing the maintenance and testing of HV/ LV wind-farm equipment and associated protection systems, the supply and installation of electrical equipment as well as electrical fault repairs for each set. Just one example of our involvement in Renewables, specifically Wind Generation – ensuring unequivocal maintenance and service support to maintain operation.

Renewable Energy

We continue to be REGO (Renewable Energy Guarantees of Origin) certified, administered by Ofgem, the energy regulator, confirming that 100% of our electricity in the UK is sourced from renewable generation, meeting the stringent quality criteria of the GHG (Greenhouse Gas) Protocol (2015).

Quartzelec actively support our clients on their sustainability journey with solar, wind and other renewable power generation schemes, providing LV / HV installation and construction, planned maintenance through to complete refurbishment and overhaul.

100%

of our electricity in the
UK is sourced from
renewable generation



Our Buildings

Quartzelec are assessing initiatives to make our buildings and their contents more sustainable and eco-friendly, enabling us to contribute to the eco-systems of the local and wider community.

Low energy, high efficiency LED lighting and the use of solar panels are key examples of proactive change.



With a conversion efficiency of over

90%

we have reduced the amount of gas required to heat hot water at our Head Office in Rugby

CASE STUDY

SUSTAINABILITY INITIATIVES AT HQ

In our most recent achievement to use less energy and to heat the water supply, an Evacuated Tube Thermal System was installed at our workshop and Head Office in Rugby, which allows sunlight to be collected and converted into heat.

With a conversion efficiency of over 90%, we are proud to have significantly reduced the amount of gas required to heat the hot water to a useable temperature, reducing carbon emissions.

Installation of Electric Vehicle Charging points, helping to support our employees' transition to driving electric vehicles as we all work together for a more cleaner and greener future has begun.

Community Engagement & Social Impact

Quartzelec actively participates in numerous community projects and charitable efforts, both at group and local business unit levels. Through these endeavours, we recognise the contributions made to our business in the communities in which we operate, as we strive to develop and maintain sustainable, mutually beneficial relationships. This commitment extends to our apprenticeship programme, which supports employment and skills development within our respective local communities.



National Charity Support - The Trussell Trust

Supporting the Trussell Trust's Mission to Feed Those in Crisis

The Trussell Trust is a charitable organisation that operates a UK wide network of foodbanks. They provide emergency food and vital support to individuals and families facing crisis situations. As a company, we recognise the growing need for the services provided by the Trussell Trust and have taken steps to contribute to their important work.

In addition to financial donations, we have organised events across the UK to support the Trussell Trust's efforts and are grateful for the time and enthusiasm our colleagues have shown in volunteering and participating in these initiatives and contributing our collective support for the Trussell Trust's mission.

For more information about the Trussell Trust and the work they do, please visit their website at www.trusselltrust.org.uk.



National Charity Support - The Smallpeice Trust

Nurturing Future Engineers with The Smallpeice Trust

The Smallpeice Trust is an independent charity dedicated to promoting engineering careers amongst young people aged 10 to 18. Through their STEM clubs, courses, and teacher-delivered training in schools, they are inspiring the next generation of engineers, developing young engineering minds and providing essential life skills such as perseverance and teamwork. This partnership is a launchpad for budding young talents, sparking the curiosity and passion of aspiring engineers and empowering them to explore the exciting possibilities within the field of engineering.

For more information about The Smallpeice Trust, please visit their website at www.smallpeicetrust.org.uk.

STUDENT FEEDBACK

100%

enjoyed the
STEM Day

94%

understand
engineering better

99%

learned
something new

90%

have a greater
appreciation of engineering

96%

gained
new skills

68%

would consider a
career in engineering

CASE STUDY

PROVIDING QUALITY EDUCATION THROUGH STEM EVENTS

Quality education can provide lifelong learning opportunities for everyone. With such a distinguished heritage, Quartzelec are proud to acknowledge our legacy and to share our knowledge with future generations exposing them to the opportunities that the engineering industry can offer.

Quartzelec partnered with The Smallpeice Trust providing three secondary schools, the opportunity to participate in a STEM day where students designed and constructed a wind turbine, competing to produce the greatest amount of electricity.

Students were required to create a gearing system, design and construct turbine blades to maximise output and build a tower to carry the turbine. Each team had to develop a marketing plan and present their ideas to the 'board'.

Immersive and engaging opportunities for students to experience hands-on learning related to circuits and electricity, forces, renewable energy and structures.





“

Pupils were thoroughly engaged and enjoyed every minute, well thought out and resourced day.



I just wanted to say a massive thank you for yesterday, our students had a great day. We can't wait to do another year!



I've learned how to improve on my teamwork, creative abilities and to work well under stress.

Please continue to make amazing things like this possible.



It was really great and enjoyable and was helpful to have a better idea on engineering.



I learned how to manage a budget and speak more confidently about what a wind turbine is. Thanks, really enjoyed it and thank you for choosing our school.

”





Local Charities & Communities

We empower our business units to allocate resources towards charitable works that align with the unique interests, passions, and local connections of their respective teams. Across our international locations, our dedicated employees have been actively “giving back” to their communities, supporting both local projects and national charities close to their hearts.

We are immensely proud of the unwavering commitment, hard work and perseverance demonstrated by our teams in their charitable endeavours.



CASE STUDY

ENGAGEMENT DAYS WITH LOCAL COMMUNITIES

Our Utilities team work with homes and businesses, providing a range of LV services that help develop the UK's electricity networks.

Working together with local communities is essential in raising awareness of the services that we will be providing, but to also ensure that their voices are heard, enabling us to deliver these solutions considerably.

Our team of engineers from Hamilton hosted a Community Engagement Event in South Lanarkshire to inform the local residents they would be installing 1km of electrical mains cable and around 200, new 3-phase service cables as part of a Proactive Unlooping project for our client SP Energy Networks (SPEN).

The strong turnout from residents enabled the team to share detailed information about the cable installation process and address any immediate concerns and questions the residents had before the work began.



CASE STUDY

SUPPORTING MALAYSIAN BASED CHARITIES

Our team at Quartzelec Malaysia united to support two local charities: RUMAH K.I.D.S and the National Autism Society of Malaysia (NASOM).

RUMAH K.I.D.S, located in Klang, Selangor support abused, orphaned and abandoned children. Over the last 30 years, they have helped over 300 children and under the guidance of house parents, they are introduced to a new family, providing a safe and secure environment for them to grow and develop, complete their education and are empowered to lead productive lives in the community.

The National Autism Society of Malaysia (NASOM), located in Bandar Puteri provide a range of support services to assist people living with autism, especially children and their immediate family members. Founded in 1986, the charity now operates 15 centres across Malaysia but in recent years, NASOM has seen a 30% increase in the number of those seeking its services across all age groups. Meeting their members needs is a daily challenge especially operating as a charity as resources are limited.

Our Quartzelec Malaysia team came together to support these charities by preparing food, daily necessities, and donating essential items such as basic toiletries and cleaning supplies. These contributions helped both RUMAH K.I.D.S and NASOM continue their vital work, providing essential care to those in need.



Building Tomorrow's Engineers

Education is key to empowering individuals to reach their full potential and lead healthier and more sustainable lives, fostering ethical working practices that benefit future generations.

Quartzelec continues to increase its investment in recruiting people and developing them to be the best they can be, through our apprenticeship programme. This includes not only workplace but college based training with immersion in our business and mentoring in invaluable life skills.

Our 4-day residential in the Lake District also provides our apprentices with personal development skills to enhance their training and development, helping them to increase their understanding of the behaviours required in the workplace.

Apprentices are employed from local communities, bringing wellbeing, prosperity and pride in their people.

WE ARE PROUD TO FILL THE SKILLS GAP AND CONTINUE TO SUPPORT THE GROWTH OF THE ENGINEERING INDUSTRY, BOTH IN THE UK AS WELL AS OVERSEAS.

“

Such a different experience! I worked on various lighting schemes including a new emergency lighting circuit for a tubular engineering solutions company and worked on ships in the Aberdeen dockyard. Something that I have never done before and thoroughly enjoyed.



PAUL - ENGINEERING TECHNICIAN
M&E MANCHESTER: WORKING AT ABERDEEN

Focus On: Apprenticeship Swap

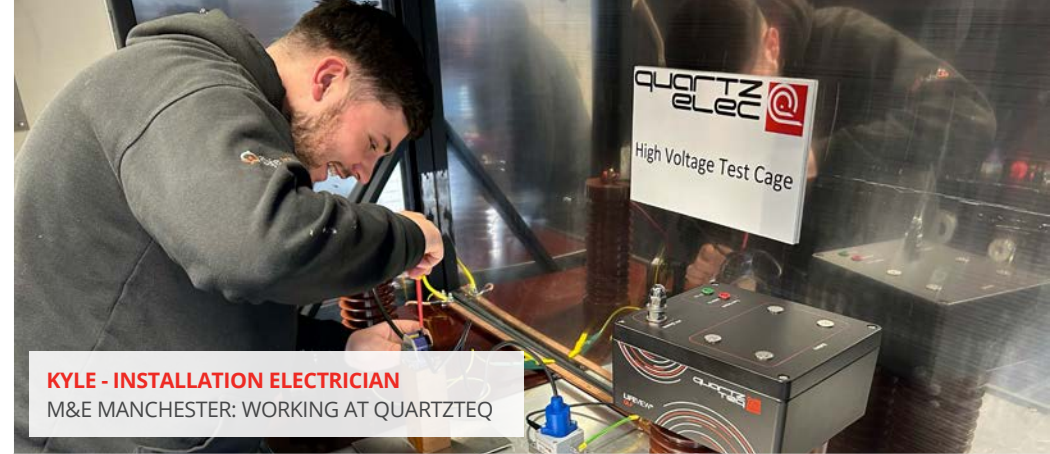
A key element of our apprenticeship programme is to offer the opportunity for apprentices to 'swap roles' and experience working life within a different Quartzelec business unit, promoting cross business collaboration whilst our apprentices benefit from skill and knowledge transfer, gaining wider experience, networking, boosting creativity and the chance to see the 'bigger picture', experiencing how the roles of individuals in different business units contribute to our overall success.

Great opportunities for our apprentices as they experience first-hand the varying level of skills in individual roles, enabling them to build a more knowledgeable insight of the business and the industry

I really enjoyed my time with the Building Services team and experienced so much including; reviewing building services drawings, practicing 'takeoffs', accumulating all equipment required for site work and requesting quotations. I helped create a takeoff for a college in Macclesfield for an upcoming tender attending tender review meetings, and spending time on site with Contract and Site managers, learning about the daily tasks of the electricians and managers including taking lux level readings, going through site amended drawings and familiarising myself with health and safety sign offs.



CALLUM - JUNIOR PROJECT ENGINEER
ROTATING MACHINES RUGBY: WORKING WITH BUILDING SERVICES



KYLE - INSTALLATION ELECTRICIAN
M&E MANCHESTER: WORKING AT QUARTZTEQ

A great experience working in Aberdeen as I really enjoyed learning about the Quartztec business. It was interesting to see how the products are manufactured and tested but also, where the products are shipped to.



ARCHIE - ENGINEERING TECHNICIAN
ROTATING MACHINES RUGBY: WORKING AT TS METALS

I've found this week very interesting and I can see the benefits of understanding roles at different units, especially working at TS Metals who often supply fabricated components to the Rugby workshop. I was able to see first-hand their processes and how they contribute to the work that I do at the workshop. Using different pieces of machinery and learning about health and safety has also been very insightful and useful to my apprenticeship.

Volunteering

The company actively encourages the use of 'Volunteering Days' and support employees who commit their own time to local community events via a paid Volunteering Day which includes, but is not limited to, community care work, environmental work, conservation projects and fundraising for community projects or charities.

CASE STUDY

CHILD BEREAVEMENT UK

Child Bereavement UK helps families to rebuild their lives when a child grieves or when a child dies, supporting children and young people (up to the age of 25) when someone important to them has died or is not expected to live, including parents and the wider family ... and this is the very reason that this charity was chosen... to raise funds so the charity can continue the good work for families that require help at the worst time. Our Project Manager for Quartzcoil in Rugby enjoyed time volunteering for the 'Child Bereavement UK' charity, participating in fund raising activities including, donation collections, selling merchandise, raising awareness of the charity, fundraising raffles and much more.

"A great experience and fantastic to hear that after this event, the charity raised over £20,000 which helped support 20 families for one year, providing bereavement support."



THE CHARITY RAISED OVER £20,000 WHICH HELPED SUPPORT 20 FAMILIES FOR ONE YEAR



CASE STUDY

LIFE CHARITY

Life is a UK pregnancy support charity, helping more than 45,000 people each year meet pregnancy or pregnancy loss with courage and dignity so they can flourish.

Our Marketing and Communications Coordinator from HQ spent a day volunteering at the 'Life' Charity Shop, helping the team to manage and organise their many donations from clothing items, accessories, toys and books, kitchenware to Halloween and Christmas decorations.

"The quickest and the most tiring 6-hour day, filled with plenty of stories and laughs but also a very humbling experience, hearing about the different types of people that they were able to help. Fantastic charity!"



Business Partnerships

We place sustainability and good ethics at the core of our business practices. Results and improvements can be achieved in isolation but considerably more so when like-minded organisations work together to find the best solutions. Working with our suppliers and other stakeholders, we manage our processes and procedures to support sustainability for a better world, now and in the future.



Supply Chain Sustainability

Quartzelec are increasingly focussed on sustainability within our supply chains – creating partnerships with our suppliers to maintain environmental and social practices across the whole chain.

We are more aware and knowledgeable of the power that sustainable supply chains can have when working together, not just for our communities but for the industry as well, helping to build supply chain resilience.

CASE STUDY

PPE & WORKWEAR

Demonstrating our commitment to sustainable supply chain partnerships, Quartzelec has continued to deliver 100% of PPE to our business units across the UK without unnecessary plastic wrapping... an 47% increase in the amount of plastic that has been saved from last year, equivalent to 43.65kg of plastics over a 12 month period.



CASE STUDY

XEROX GREEN WORLD ALLIANCE PROGRAMME

Recycling printer cartridges saves millions of gallons of oil a year. In total, printer cartridge waste can be reduced to just 3% when this is done effectively. We are proud to participate in the Xerox Green World Alliance, a valuable recycling programme that minimises environmental impacts of printer supplies and provides viable options to throwing away empty containers, keeping thousands of tonnes of supplies out of landfill or heat recovery.

Our Quartzelec People

Our people are firmly committed to upholding our accountability to the planet, the communities in which we operate, our colleagues, and the ethical standards of our business. This shared sense of responsibility extends to the energy and resources we consume, as well as the waste and emissions we generate.

To deliver on this commitment, we have nominated CSR Champions and dedicated SHEQ (Safety, Health, Environment, and Quality) Teams within each of our business units. These teams play a vital role in driving regular communication and education initiatives, which provide ongoing advice and practical solutions to assist in reducing our environmental impact.



Health & Wellbeing

We have been working hard at prioritising our health and wellbeing services for our Quartzelec People.

Our commitment to our employees health and wellbeing is key to promoting a happy and healthy work life balance, as we give our employees the tools to look after their own health and wellbeing as well as the ability to look out for others. Together, we can create a safe, happy and healthy environment where all employees can thrive.

Focus On: Its Safe To Say

'It's Safe to Say' is an employee focused well-being programme with the intention to provide a 'safe' environment to speak out or look for support without reprisal and in complete confidentiality. By providing a platform for people to help speak confidently to resolve any concerns, we hope to make our employees feel valued and help promote a culture of safe and healthy working.

OUR COMMITMENT TO OUR EMPLOYEES HEALTH AND WELLBEING IS KEY TO PROMOTING A HAPPY AND HEALTHY WORK LIFE BALANCE

Introducing the
IT'S SAFE TO SAY
campaign

Our employees are our most valuable asset and their health, safety and welfare is our priority. The 'It's Safe to Say' campaign has the interests of all Quartzelec employees at its core. To promote the importance of opening up about any concerns - establishing a 'safe environment' with someone to listen, offer support or help resolve any issues that may affect our people in their workplace. Providing confidence that everyone will be treated respectfully, sensitively and where necessary confidentially, without detriment or reprisal.

I'm fatigued
That's not safe
I need support
I don't feel safe
I'm not respected
I don't have the right equipment
I'm not OK
I have a medical issue

These might be some of your concerns...

If you need help or advice now your immediate points of contact are:
Unum (the Quartzelec employee assistance programme) | T: 0800 048 2702
HR Dept. or SHEQ Team | T: 01788 512512
H&S Reps | See notice boards for details
E: safetosay@quartzelec.com (in confidence)
Always speak to your Line Manager for front line support

#ItsSafeToSay



Reducing Inequalities

The field of engineering is a traditionally male dominated environment, with females continuing to be under represented. Quartzelec is actively working to close the gender gap. This includes secondary school-level support for girls in pursuing STEM careers, identifying advancement opportunities for female employees with structured leadership training, mentoring and coaching, implementing inclusive working practices and removing barriers.



Gender Gap Analysis

Focus On: STEM Event Feedback

Great to see such positive feedback during our sponsored STEM days from the female students, especially when compared to the overall scores! A great start to engaging more females in the industry and closing the gender gap.

FEMALE	OVERALL	FEMALE	OVERALL
STRONGLY AGREE		AGREE	
I enjoyed the STEM Day			
80%	40%	20%	10%
I learned something new			
52%	26%	48%	24%
I've gained new skills			
49%	24%	52%	26%
I now understand engineering better			
54%	27%	35%	17%
I now have a greater appreciation of engineering			
49%	24%	46%	23%
I would now consider a career in engineering			
31%	16%	36%	18%

Driver Education

Quartzelec continues to communicate 'Safe Driver' tips to help educate how to drive safely and efficiently. Through SHEQ briefings and safety alerts, we encourage and remind all employees to ensure they are following the principles and the importance of playing their part in reducing emissions of harmful pollutants.

Tyre safety was just one of our initiatives this year that was in the spotlight as we raised awareness of the danger of not checking tyres regularly and how overlooking this critical safety check could result in a tragic outcome.



CASE STUDY

SUPPORTING BRAKE, THE ROAD SAFETY CHARITY

Brake is a road safety charity working with communities and organisations across the UK to stop the tragedy of road deaths and injuries, make streets and communities safer for everyone, and support people bereaved and seriously injured on roads.

This year, the theme was 'Safe Roads for All' as we reminded our Quartzelec People and their families, about who they share the road with, providing tips on how they can make sure the roads are safe for everyone and the unfortunate consequences if safe driving is not followed. Focussing our engagement with our Quartzelec Kids, we launched two colouring competitions, reminding them to be aware and alert on the roads.

Sustainable Business Growth

Even in the face of a challenging economic climate, from higher energy costs, high inflation and higher interest rates in the UK, Quartzelec has continued to deliver on its growth strategy. With an increase in turnover of 4% from the previous year, we have continued to provide employment and other opportunities within our communities, contributing to a sustainable industry and a resilient infrastructure.

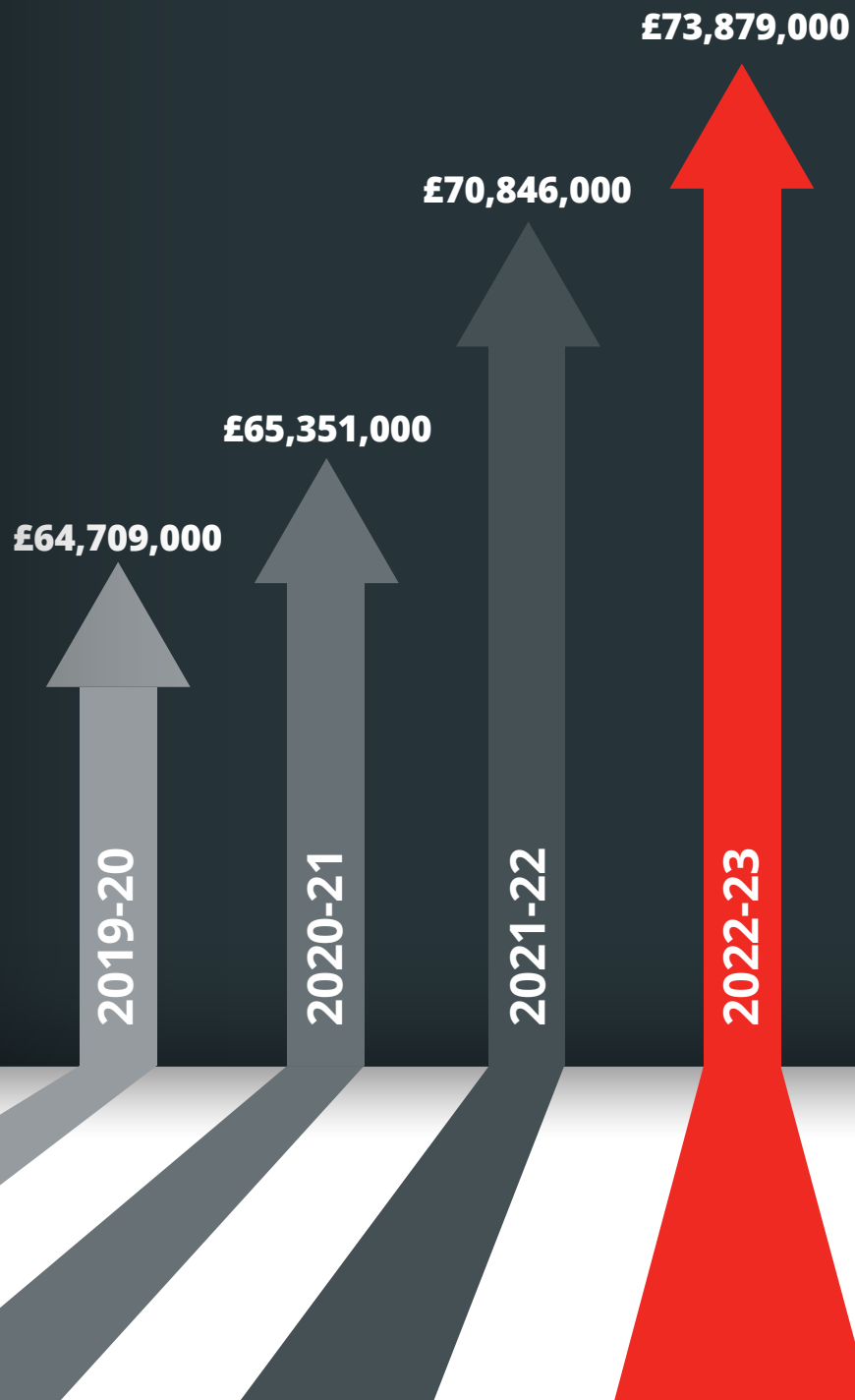
4%

increase in turnover

5%

increase in employees





“

The safety and wellbeing of both customers and employees remains our primary focus and over the past couple of years, we have built and structured the business for managed growth. We are optimistic about our continued organic growth which is key to development in all our focused markets and our geographic offerings.

Onwards & Upwards

We are deeply proud of all the efforts that have been made to achieve our sustainability priorities during 2022/23 as we continued to provide an exceptionally high level of service to all of our stakeholders, with the objective of being the international independent partner of choice within the field of engineering services.

Providing vital services and support to many key industry, infrastructure and service sectors, including Power Generation, Renewables, Utilities, Construction, Manufacturing, Oil & Gas, Marine and Rail is key...and all whilst focussing on our sustainability practices.



More Work to be done

However, this is not the end for us. Against a background of increasingly challenging trading conditions, we have continued to deliver on our growth strategy, building a solid foundation that we can develop. Our priorities for 2023/24 are to;

-  **Improve our recycling and waste reduction targets**
-  **Invest in CO2 emission reduction initiatives across our buildings**
-  **Continue to engage with charities and local communities**
-  **Implement new driver behaviour initiatives**
-  **Focus on the health, safety and wellbeing of our Quartzelec people**
-  **Further enhance our sustainability knowledge and initiatives**

THE QUARTZELEC GROUP OF COMPANIES
ARE COMMITTED TO CONTRIBUTING TO
A SUSTAINABLE INDUSTRY, A RESILIENT
INFRASTRUCTURE AND MUTUALLY
BENEFICIAL RELATIONSHIPS

1 NO POVERTY 	2 ZERO HUNGER 	3 GOOD HEALTH & WELL-BEING 	4 QUALITY EDUCATION 	5 GENDER EQUALITY 
6 CLEAN WATER & SANITATION 	7 AFFORDABLE & CLEAN ENERGY 	8 DECENT WORK & ECONOMIC GROWTH 	9 INDUSTRY, INNOVATION & INFRASTRUCTURE 	10 REDUCED INEQUALITIES 
11 SUSTAINABLE CITIES & COMMUNITIES 	12 RESPONSIBLE CONSUMPTION & PRODUCTION 	13 CLIMATE ACTION 	14 LIFE BELOW WATER 	15 LIFE ON LAND 
 SUSTAINABLE DEVELOPMENT GOALS			16 PEACE, JUSTICE & STRONG INSTITUTIONS 	17 PARTNERSHIPS FOR THE GOALS 

QUARTZ
ACADEMY

it's safe to say

QUARTZ
elec 

T: +44 (0)1788 512512 | E: info@quartzelec.com | www.quartzelec.com